
Auxiliary Lock Systems

Auxiliary Locks and Trim

Non-Keyed Deadbolt Trim

Turnknob Design Options

M61-T Round
(Traditional Rose)



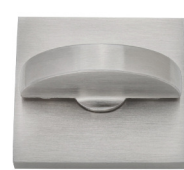
M61 Round
(Smooth Rose)



M61-O Octagonal
(Octagonal Rose)



M61-Q Square
(Square Rose)



H41 Accessibility



A51 Oval



R71 Accessibility



C81 Round



Emergency Release Options

EMT



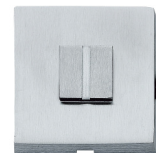
EMTI
with indicator window



TPR
Two-piece rose

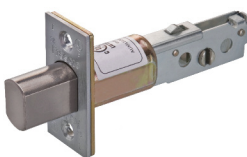


SQR



Deadbolt Mechanical Options

ULDB70 UL-Rated
Deadbolt Latch



PB70
Privacy Bolt



DL70 Standard
Deadbolt Latch



MD70
Mortise Dead Lock



See ordering guide for non-keyed auxiliary bolt trim on next page.

Communicating Deadbolt

B80 and B81 Single-Side Heavy Duty Communicating Deadbolt



Features

- 1" throw high strength stainless steel deadbolt resists sawing and kick-in attacks
- Ergonomic pivot-type turnknob for ease of use
- Multiple backset choices including 2-3/4" and 2-3/8"
- Certified to meet or exceed ANSI/BHMA A 156.5 Grade 1 strength and operational requirements
- UL listed for "A" label (3-hour) single doors, 4' x 8'
- Available both as B80 for blind hole applications (flush surface on communicating side of door) or as B81 for through bore applications (cover plate on communicating side of door)

Specifications:
Door Thickness: 1-3/8" to 2" wood or metal door; thick door configurations available upon request
Backset: 2-3/4" (70mm) standard; 2-3/8" (60mm) optional
Deadbolt: 1" throw
Strikes: Square corner, 1-1/8" x 2-3/4", furnished with dust box and frame support plate
Finishes: Per project specification (US4, US5, US10, US10B, US26, US26D)

FUNCTION CODE (Deadbolt Application)	Illustration Inside ◀ ▶ Outside	Operation
B80 (BLIND HOLE)		Deadbolt by thumbturn inside. No trim on other side.
B81 (THROUGH BORE)		Deadbolt by thumbturn inside. Blank plate on other side.

Communicating deadbolt ordering example:

Communicating deadbolt for blind hole prep, standard backset, in polished chrome finish with square corner strike.

Function	Item	Finish	Backset	Misc.
B80	COM DB	US26	2-3/4	
B80 (Blind hole prep) B81 (Through hole prep)	Communicating Deadbolt COM DB	Per project specification	2-3/8" 2-3/4"	

D500 Series

Square Contemporary Deadbolts

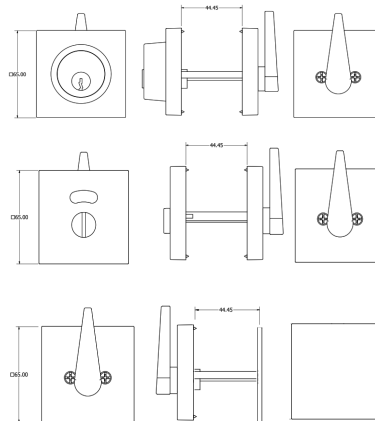


STANDARD SPECIFICATIONS

Door Prep	Cross bore: 2-1/8" Edge bore: 1" Latch face: 1" or 1-1/8" x 2-1/4"	Latches	2-3/8" & 2-3/4" available Faceplate: 1" x 2-1/4" Bolt: Full 1" throw
Backset	Fits 2-3/8" and 2-3/4"	Strikes	1-1/8" x 2-3/4" Includes Reinforcement Strike
Door Thickness	1-3/8" ~ 1-3/4" door standard	Wood Screws	Combination screws that suit both wood or metal door mounting.
Cylinder	SC Keyway 6-pin Standard	Door Handing	Required on D540

FUNCTIONS

Outside	Inside	Model	Type	Description
		D520	Single Cylinder	By Key Outside and By thumbturn Inside
		D540	Privacy	Thumbturn Inside and Visual Occupancy Indicator Outside
		D560	Communicating	Thumbturn Inside and Blank Plate on Outside



D600 Series

Round Contemporary Deadbolts



STANDARD SPECIFICATIONS

Door Prep	Cross bore: 2-1/8" Edge bore: 1" Latch face: 1" or 1-1/8" x 2-1/4"	Latches	2-3/8" & 2-3/4" available Faceplate: 1" x 2-1/4" Bolt: Full 1" throw
Backset	Fits 2-3/8" and 2-3/4"	Strikes	1-1/8" x 2-3/4" Includes Reinforcement Strike
Door Thickness	1-3/8" ~ 1-3/4" door standard	Wood Screws	Combination screws that suit both wood or metal door mounting.
Cylinder	SC Keyway 6-pin Standard	Door Handing	Required on D540

FUNCTIONS

Outside	Inside	Model	Type	Description
		D620	Single Cylinder	By Key Outside and By thumbturn Inside
		D640	Privacy	Thumbturn Inside and Visual Occupancy Indicator Outside
		D660	Communicating	Thumbturn Inside and Blank Plate on Outside

